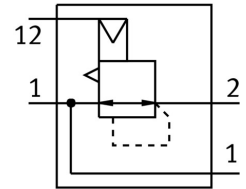
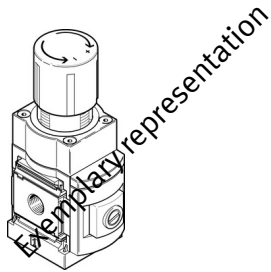


# Precision pressure regulator MS6-LRP

Part number: 538028

FESTO



 [General operating condition](#)

## Data sheet

Overall data sheet – Individual values depend upon your configuration.

| Feature   | Value  |
|---|--|
| Size  | 6  |
| Series  | MS   |
| Actuator lock   | Rotary knob with detent<br>Rotary knob with integrated lock<br>can be closed with accessories                            |
| Mounting position                                     | optional   |
| Design  | Piloted precision diaphragm control valve<br>Piloted precision pressure regulator  |
| Controller function                                   | Output pressure constant<br>With secondary venting   |
| Symbol  | 00991973<br>00995303<br>00995326   |
| Pressure gauge (ANALOG) or Pressure display (DIGITAL) | Prepared for G1/4<br>Prepared for G1/8<br>Via pressure sensor<br>With pressure gauge<br>Via operational status indicator |
| Operating pressure                                    | 0.1 MPa ... 1.4 MPa  |
| Operating pressure                                    | 1 bar ... 14 bar   |
| Pressure regulation range                             | 0.05 bar ... 12 bar  |
| Max. pressure hysteresis                              | 0.02 bar ... 0.05 bar  |
| Flow rate of secondary exhaust                        | 220 l/min ... 900 l/min  |
| Standard nominal flow rate (standardised to DIN 1343) | 800 l/min ... 9000 l/min   |
| Operational voltage range DC                          | 21.6 V ... 26.4 V  |
| Max. electrical power consumption                     | 4.2 W  |
| Max. current consumption                              | 0.16 A   |
| Nominal operating voltage DC                          | 24 V   |
| Residual ripple                                       | 10 %   |
| Signal range analogue input                           | 0 - 10 V<br>4 - 20 mA  |
| Approval  | c UL us - Recognized (OL)  |
| CE mark (see declaration of conformity)               | To EU EMC Directive<br>To EU Explosion Protection Directive (ATEX)<br>In accordance with EU RoHS Directive               |

| Feature   | Value   |
|---|---|
| CE marking (see declaration of conformity)        | To UK instructions for EMC<br>To UK EX instructions<br>To UK RoHS instructions                        |
| Explosion protection certification outside the EU | EPL Db (GB)<br>EPL Gb (GB)  |
| Explosion protection                              | Zone 1 (ATEX)<br>Zone 1 (UKEX)<br>Zone 2 (ATEX)<br>Zone 21 (ATEX)<br>Zone 21 (UKEX)<br>Zone 22 (ATEX) |
| ATEX category gas                                 | II 2G   |
| ATEX category dust                                | II 2D   |
| Explosion ignition protection type for gas        | Ex h IIC T6 Gb X  |
| Explosion ignition protection type for dust       | Ex h IIIC T60°C Db X  |
| Explosion ambient temperature                     | -10°C ≤ Ta ≤ +60°C  |
| Operating medium                                  | Compressed air to ISO 8573-1:2010 [7:4:4]<br>Inert gases  |
| Note on operating and pilot medium                | Ester oil < 0.1 mg/m³, to ISO 8573-1:2010 [-:-:2]<br>Lubricated operation not possible                |
| Corrosion resistance class CRC                    | 2 - Moderate corrosion stress   |
| LABS (PWIS) conformity                            | VDMA24364-B1/B2-L   |
| Storage temperature                               | -10 °C ... 60 °C  |
| Media temperature                                 | -10 °C ... 60 °C  |
| Ambient temperature                               | -10 °C ... 60 °C  |
| Product weight                                    | 800 g ... 1120 g  |
| Type of mounting                                  | Either:<br>Front panel mounting<br>In-line installation<br>With accessories                           |
| Pilot air port 12                                 | G1/8<br>1/8 NPT   |
| Pneumatic connection, port 1                      | G1/4<br>G3/8<br>G1/2<br>G3/4<br>1/4 NPT<br>3/8 NPT<br>1/2 NPT<br>3/4 NPT                              |
| Pneumatic connection, port 2                      | G1/4<br>G3/8<br>G1/2<br>G3/4<br>1/4 NPT<br>3/8 NPT<br>1/2 NPT<br>3/4 NPT                              |
| Pneumatic connection, port 3                      | G1/4  |
| Note on materials                                 | RoHS-compliant  |
| Material seals                                    | NBR   |
| Material housing                                  | Aluminium   |